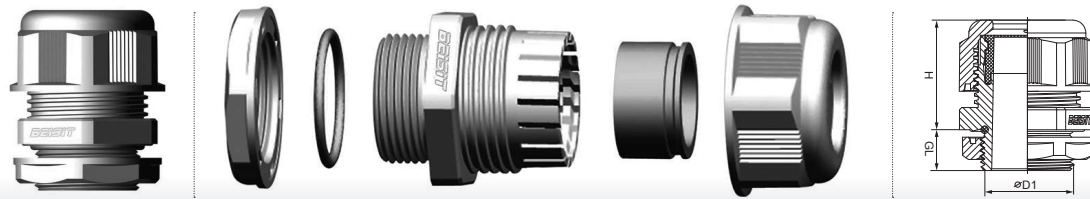


PG NYLON CABLE GLAND



SPECIFICATIONS



Material:	PA (NYLON), UL 94 V-2
Hermetic seal:	NBR, (EPDM Upon Request)
O-Ring:	EPDM
Working temperature:	-40C° to 100C° in static state, Instantaneous heat resistance up to 120C°, -20C° to 80C° in dynamic state, Instantaneous heat resistance up to 100C°
Color:	Grey, Black, other colors customized.

TECHNICAL AND ORDERING DATA

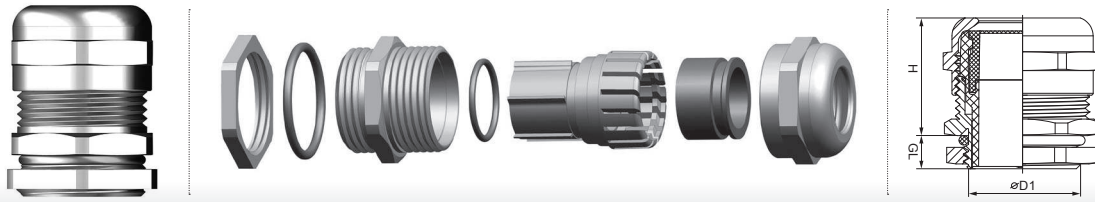
Part #	Thread	∅	H	GL	⚡
RAL7035 ●	∅ D1	mm	mm	mm	mm
P0707	PG 7	3-6,5	21	8	15
P0705	PG 7	2-5	21	8	15
P0908	PG 9	4-8	22	8	19
P0906	PG 9	2-6	22	8	19
P1110	PG 11	5-10	25	8	22
P1107	PG 11	3-7	25	8	22
P13512	PG 13,5	6-12	27	9	24
P13509	PG 13,5	5-9	27	9	24
P1614	PG 16	10-14	28	10	27
P1612	PG 16	7-12	28	10	27
P1915-DH	PG 19	11-15	30	12	27
P2118	PG 21	13-18	31	11	33
P2116	PG 21	9-16	31	11	33
P2925	PG 29	18-25	37	11	42
P2920	PG 29	13-20	37	11	42
P3632	PG 36	22-32	48	13	53
P3626	PG 36	20-26	48	13	53
P4238	PG 42	32-38	49	13	60
P4231	PG 42	25-31	49	13	60
P4844	PG 48	37-44	49	14	65
P4835	PG 48	29-35	49	14	65
P4830	PG 48	25-30,5	49	14	65
P4840	PG 48	30,5-40	49	14	65
P4850	PG 48	40-50	52	14	72

» Dimensions are displayed in millimeters unless otherwise stated.

» Photographs are not a true representation of the product above.

Disclaimer: The dimensions provided are for guidance only and Simplex Cables reserves the right to change these without prior notification. For any critical application please contact the sales office to check the latest data.

PG METAL CABLE GLAND



SPECIFICATIONS



Material:
 Fixture pack:
 Hermetic seal:
 O-Ring:
 Protection degree:
 Working temperature:

Nickel-plated brass
 PA (NYLON), UL 94 V-2
 NBR, (EPDM Upon Request)
 EPDM
 IP68
 -40C° to 100C°, Instantaneous heat resistance up to 120C°

TECHNICAL AND ORDERING DATA

Part #	Thread	Øk	H	GL	
	Ø D1	mm	mm	mm	mm
P0707BR	PG 7	3-6,5	19	5	14
P0705BR	PG 7	2-5	19	5	14
P0908BR	PG 9	4-8	21	6	17
P0906BR	PG 9	2-6	21	6	17
P1110BR	PG 11	5-10	22	6	20
P1107BR	PG 11	3-7	22	6	20
P13512BR	PG 13,5	6-12	23	6,5	22
P13509BR	PG 13,5	5-9	23	6,5	22
P1614BR	PG 16	10-14	24	6,5	24
P1612BR	PG 16	7-12	24	6,5	24
P2118BR	PG 21	13-18	25	7	30
P2116BR	PG 21	9-16	25	7	30
P2925BR	PG 29	18-25	31	8	40
P2920BR	PG 29	13-20	31	8	40
P3632BR	PG 36	22-32	37	8	50
P3626BR	PG 36	20-26	37	8	50
P4238BR	PG 42	32-38	37	9	57
P4231BR	PG 42	25-31	37	9	57
P4844BR	PG 48	37-44	38	10	64
P4835BR	PG 48	29-35	38	10	64

» Dimensions are displayed in millimeters unless otherwise stated.
 » Photographs are not a true representation of the product above.

Disclaimer: The dimensions provided are for guidance only and Simplex Cables reserves the right to change these without prior notification. For any critical application please contact the sales office to check the latest data.